

BELLA+CANVAS®

FABRIC GUIDE & SCREEN PRINTING TIPS

Below you will find fabric details and printing instructions per fabrication. A test sample run is always recommended before printing large quantities.

***For best results we suggest using a poly ink and/or poly blocker for all fabric containing polyester**

Fabric Care Instructions

RETAIL JERSEY



FABRIC DETAILS

100% Airlume combed and ring-spun cotton, 32 single 4.2 oz/yd², 142 g/m². Custom fabrications apply for Athletic Heather, Marble Colors, and Striped colors.

PRINTING TECHNIQUES

RETAIL JERSEY PRINTING TECHNIQUES: PLASTISOL-320 degrees, medium flashing temperature, 10-15% reducer/finesse WATER BASE INK-300/310 degrees, medium flashing temperature, soft hand/ curable reducer at 5%. Heat Transfer Vinyl Tips: 320 degrees, 15 seconds, medium pressure, Stahls' CAD-CUT Fashion Film

HEATHER CVC*



FABRIC DETAILS

52% Airlume Combed and ring-spun cotton 48% polyester 32 Singles 4.2 oz/yd².

PRINTING TECHNIQUES

HEATHER CVC PRINTING TECHNIQUES: Plastisol 320 Degrees, Medium flashing temperature, 10-15% reducer. WATER BASE INK-300/310 degrees, medium flashing temperature, soft hand reducer/curable reducer at 5%.

TRIBLEND JERSEY*



FABRIC DETAILS

Tees - 50% polyester, 25% Airlume combed and ring-spun cotton, 25% rayon, 40 single 3.8 oz/yd², 115 g/m². **Jackets** - 50% polyester, 25% Airlume combed and ring-spun cotton, 25% rayon, 30 single 5.6 oz/yd², 190 g/m². **Cardigan** - 50% polyester, 37.5% Airlume combed and ring-spun cotton, 12.5% rayon, 30 single 5.6 oz/yd², 190 g/m². **Black Heather Triblend Fabrication** - 70% Airlume combed and ring-spun cotton, 15% polyester, 15% rayon.

PRINTING TECHNIQUES

TRIBLEND JERSEY PRINTING TECHNIQUES: PLASTISOL-320 degrees, low flashing temperature, viscosity reducer, low cure ink/flash additive, stretch additive, soft hand/curable reducer at 5% WATER BASE INK-300/310 degrees, low flashing temperature, retarder at 5%. For best results on Solid Black Triblend we suggest using a poly ink and/or poly blocker. Heat Transfer Vinyl Tips: 280 degrees, 8-10 seconds, medium pressure, Stahls' CAD-CUT Premium Plus

FLOWY POLY VISCOSE*



FABRIC DETAILS

65% polyester, 35% viscose, 32 single 3.7 oz/yd2, 125 g/m2. Custom fabrications apply for Athletic Heather, Marble Colors, and Striped colors.

PRINTING TECHNIQUES

POLY VISCOSE PRINTING TECHNIQUES: PLASTISOL-320 degrees, low/medium flashing temperature, soft hand/curable reducer at 5% WATER BASE INK-320 degrees, low flashing temperature, retarder at 5%. Heat Transfer Vinyl Tips: 280 degrees, 8-10 seconds, medium pressure, Stahls' CAD-CUT Premium Plus

POLY-COTTON JERSEY*



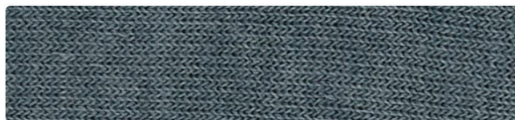
FABRIC DETAILS

52% Airlume combed and ring-spun cotton, 48% polyester, 40 single 3.6 oz/yd2, 122 g/m2.

PRINTING TECHNIQUES

POLY-COTTON JERSEY PRINTING TECHNIQUES: PLASTISOL-320 degrees, medium flashing temperature, extender base in place of white underbase, soft hand reducer/curable reducer at 5% WATER BASE INK-300/310 degrees, high/low flashing temperature, discharge additive suggested. We recommend the use of a poly blocker and/or poly ink for the best results. Heat Transfer Vinyl Tips: 320 degrees, 15 seconds, medium pressure, Stahls' CAD-CUT Fashion Film

POLY-COTTON FLEECE*



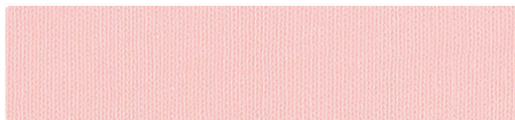
FABRIC DETAILS

52% Airlume combed and ring-spun cotton, 48% polyester fleece, 7.0 oz/yd2, 220 g/m2.

PRINTING TECHNIQUES

POLY-COTTON FLEECE PRINTING TECHNIQUES: PLASTISOL-320 degrees, medium flashing temperature, soft hand extender, soft hand/curable reducer at 5% WATER BASE INK-300/310 degrees, medium flashing temperature, soft hand reducer, stretch additive, low ink viscosity, retarder at 5%. We recommend the use of a poly blocker and/or poly ink for the best results.

SHEER JERSEY



FABRIC DETAILS

100% Airlume combed and ring-spun cotton, 40 single, 3.2 oz/yd2, 110 g/m2. Custom fabrication applies for Athletic Heather

PRINTING TECHNIQUES

SHEER JERSEY PRINTING TECHNIQUES: PLASTISOL-320 degrees, low flashing temperature, 10-15% reducer/finesse WATER BASE INK-300/310 degrees, medium flashing temperature, soft hand/curable reducer at 5%.

TRIBLEND SPONGE FLEECE*



FABRIC DETAILS

50% polyester, 37.5% Airlume combed and ring-spun cotton, 12.5% rayon, 32 single 8.2 oz/yd2, 278 g/m2.

PRINTING TECHNIQUES

TRIBLEND SPONGE FLEECE PRINTING TECHNIQUES: PLASTISOL-320 degrees, low flashing temperature, low mesh counts, soft hand/curable reducer at 5% WATER BASE INK-300/310 degrees, low flashing temperature, low mesh counts, retarder at 5%.

1X1 BABY RIB & 2X1 RIB



FABRIC DETAILS

100% Airlume combed and ring-spun cotton, 30 single 1x1 baby rib knit, 5.8 oz/yd2, 195 g/m2. Custom fabrication applies for Athletic Heather.

PRINTING TECHNIQUES

1X1 BABY RIB & 2X1 RIB PRINTING TECHNIQUES: PLASTISOL-320 degrees, low flashing temperature, stretch additive, soft hand/curable reducer at 5% WATER BASE INK-300/310 degrees, medium flashing temperature, stretch additive, low ink viscosity, retarder at 5%. Heat Transfer Vinyl Tips: 280 degrees, 8-10 seconds, medium pressure, Stahls' CAD-CUT Premium Plus

SLUB*



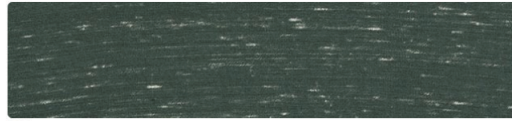
FABRIC DETAILS

50% polyester, 37.5% Airlume combed and ring-spun cotton, 12.5% rayon, 32 single 4.0 oz/yd², 136g/m².

PRINTING TECHNIQUES

SLUB PRINTING TECHNIQUES:
PLASTISOL-320 degrees, low flashing temperature, soft hand/ curable reducer at 5% WATER BASE INK-300/310 degrees (120 sec), low flashing temperature, retarder at 5%. Heat Transfer Vinyl Tips: 280 degrees, 8-10 seconds, medium pressure, Stahls' CAD-CUT Premium Plus.

MARBLE JERSEY*



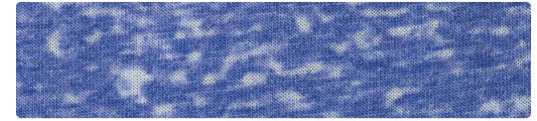
FABRIC DETAILS

Womens- 91% polyester, 9% Airlume combed and ring-spun cotton, 40 single 3.5 oz/yd², 119 g/m² **Mens-** 91% polyester, 9% Airlume combed and ring-spun cotton, 30 single 4.0 oz/yd², 136 g/m².

PRINTING TECHNIQUES

MARBLE JERSEY PRINTING TECHNIQUES:
PLASTISOL-320 degrees, low/medium flashing temperature, soft hand/curable reducer at 5% WATER BASE INK-320 degrees, low flashing temperature, retarder at 5%. Heat Transfer Vinyl Tips: 280 degrees, 8-10 seconds, medium pressure, Stahls' CAD-

ACID WASH*



FABRIC DETAILS

52% Airlume combed and ring-spun cotton, 48% polyester, 32 single 4.4 oz/yd², 149 g/m².

PRINTING TECHNIQUES

ACID WASH PRINTING TECHNIQUES:
PLASTISOL-320 degrees, low/medium flashing temperature, soft hand/curable reducer at 5% WATER BASE INK-300/310 degrees (120 sec), low/medium flashing temperature, retarder at 5%. Heat Transfer Vinyl Tips: 320 degrees, 15 seconds, medium pressure, Stahls' CAD-CUT Fashion Film.

MINERAL WASH



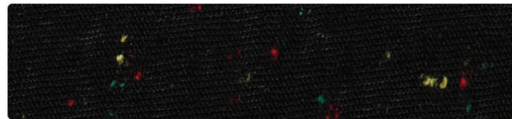
FABRIC DETAILS

100% Airlume combed and ring-spun cotton, 32 single 4.4 oz/yd², 149g/m².

PRINTING TECHNIQUES

MINERAL WASH PRINTING TECHNIQUES:
PLASTISOL-320 degrees, medium flashing temperature, soft hand/curable reducer at 5% WATER BASE INK-300/310 degrees (120 sec), medium flashing temperature, retarder at 5%. Heat Transfer Vinyl Tips: 320 degrees, 15 seconds, medium pressure, Stahls' CAD-CUT Fashion Film.

SPECKLED*



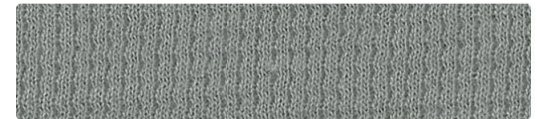
FABRIC DETAILS

50% polyester, 25% Airlume combed and ring-spun cotton, 25% rayon, 32 single 4.0 oz/yd², 136 g/m².

PRINTING TECHNIQUES

SPECKLED PRINTING TECHNIQUES:
PLASTISOL-320 degrees, low flashing temperature, soft hand/curable reducer at 5% WATER BASE INK-300/310 degrees (120 sec), low flashing temperature, retarder at 5%. Heat Transfer Vinyl Tips: 280 degrees, 8-10 seconds, medium pressure, Stahls' CAD-CUT Premium Plus.

THERMAL*



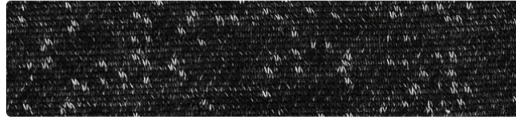
FABRIC DETAILS

MENS/WOMENS - 55% Airlume combed and ring-spun cotton, 45% polyester, 40 single 4.5 oz/yd², 150 g/m². BABY - 60% Airlume combed and ring-spun cotton, 40% polyester, 40 single 4.5 oz/yd², 150 g/m².

PRINTING TECHNIQUES

THERMAL PRINTING TECHNIQUES:
PLASTISOL-320 degrees, low flashing temperature, soft hand/ curable reducer at 5% WATER BASE INK-300/310 degrees, low flashing temperature, extender base, stretch additive, low ink viscosity, soft hand reducer, retarder at 5%.

DIGITAL FLEECE*



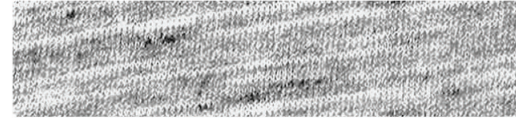
FABRIC DETAILS

100% polyester, 32 single 7.0 oz/yd2, 220 g/m2.

PRINTING TECHNIQUES

DIGITAL FLEECE PRINTING TECHNIQUES:
PLASTISOL-320 degrees, medium flashing temperature, soft hand extender, soft hand/curable reducer at 5% WATER BASE INK-300/310 degrees, medium flashing temperature, soft hand reducer, stretch additive, low ink viscosity, retarder at 5%.

MARBLE FLEECE*



FABRIC DETAILS

85% Airlume combed and ring-spun cotton, 15% polyester, 32 single 7.0 oz/yd2, 220 g/m2.

PRINTING TECHNIQUES

MARBLE FLEECE PRINTING TECHNIQUES:
PLASTISOL-320 degrees, medium flashing temperature, soft hand extender, soft hand/curable reducer at 5% WATER BASE INK-300/310 degrees, medium flashing temperature, soft hand reducer, stretch additive, low ink viscosity, retarder at 5%.